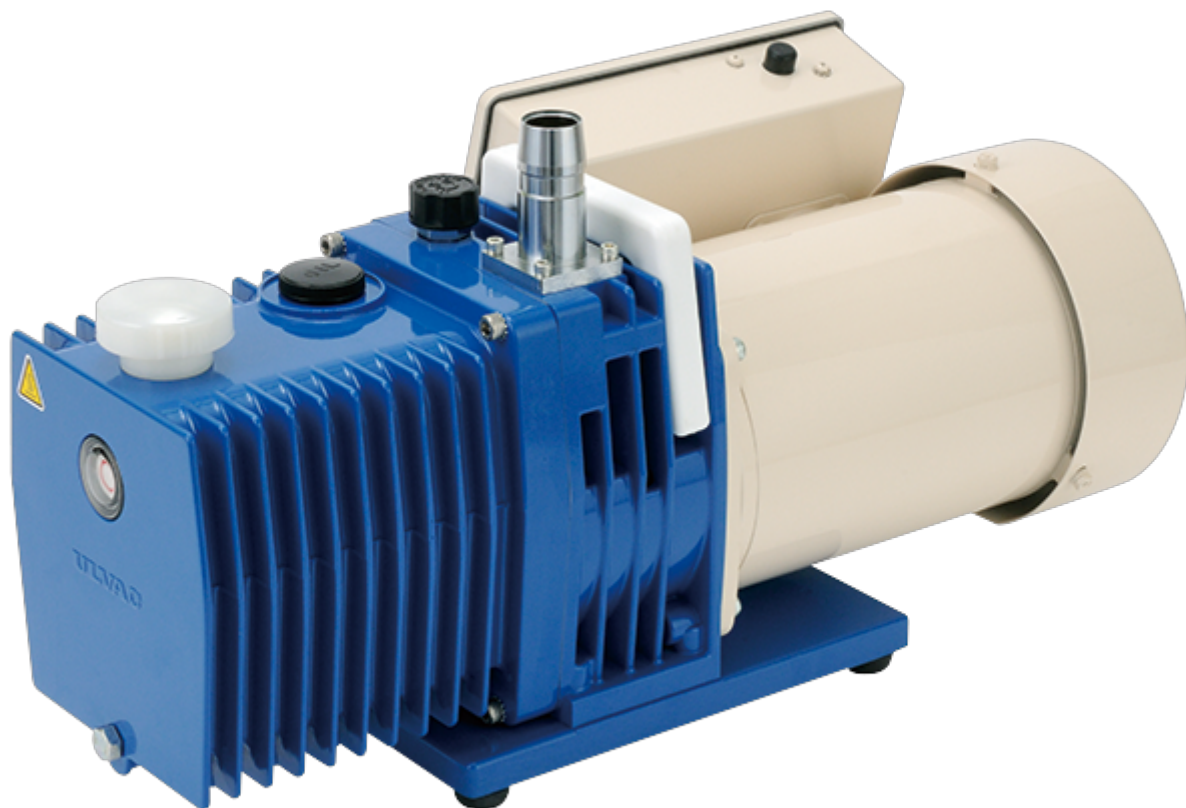


# Oil-Sealed Rotary Vacuum Pumps **G-101D**

G Series



## Outline

This is a rotary blade type vacuum pump that uses lubricating oil. A vacuum pump with low noise, low vibration and high reliability. G series is a standard type.

## Features and Cautions on use

- The oil rotary vacuum pump which had abundant track records and realized budget prices.
- The vacuum pump in which it is small and carrying is useful.
- Compact size suitable for equipment inclusion.
- The motor direct connection type with which a high velocity revolution and a small and big exhaust speed are obtained compared with a belt system.
- Low vibration and noise.
- A two-stage exhaust system is pressure (good vacuum) lower than an one-stage exhaust system.
- The safety design by manual return type thermal protector built-in.

## Specification

Item	Unit	50Hz	60Hz
Actual Pumping Speed	L/min	100	120
Ultimate Pressure	Pa		0.67
Ultimate Pressure (G.V. open)	Pa		6.7
Motor Output	W		400
Recommended oil			SMR-100
Oil capacity	mL		800
Weight	kg		23.1
Inlet, Outlet port diameter	mm	O.D. $\phi$ 27×I.D. $\phi$ 20, G1	
Ambient temperature	°C	7~40	
Overall dimensions	mm	234(W) × 500(L) × 264(H)	
RoHS applied		●	

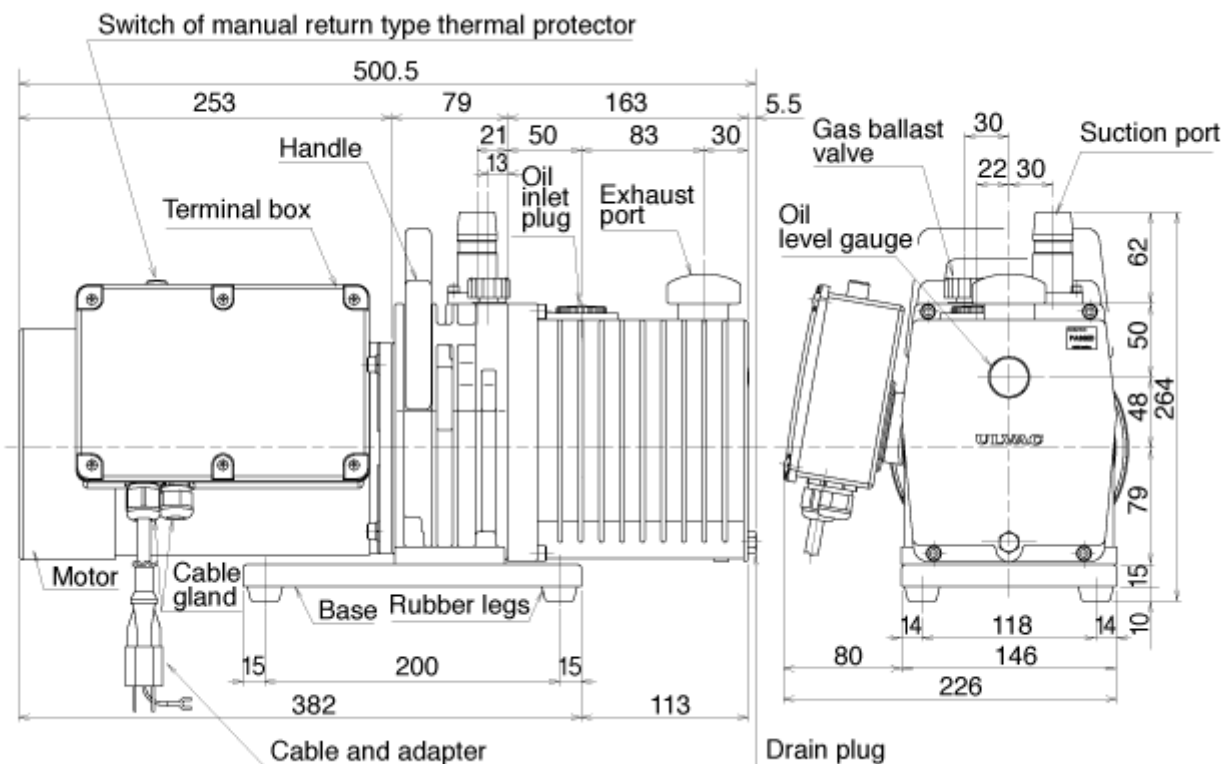
Ultimate pressure is the value measured by Pirani gauge. When measured with a Mcleod vacuum gauge, the value will be an order of magnitude lower for vacuum pumps with an ultimate pressure of 1.3Pa or less.

## Power Supply/Voltage

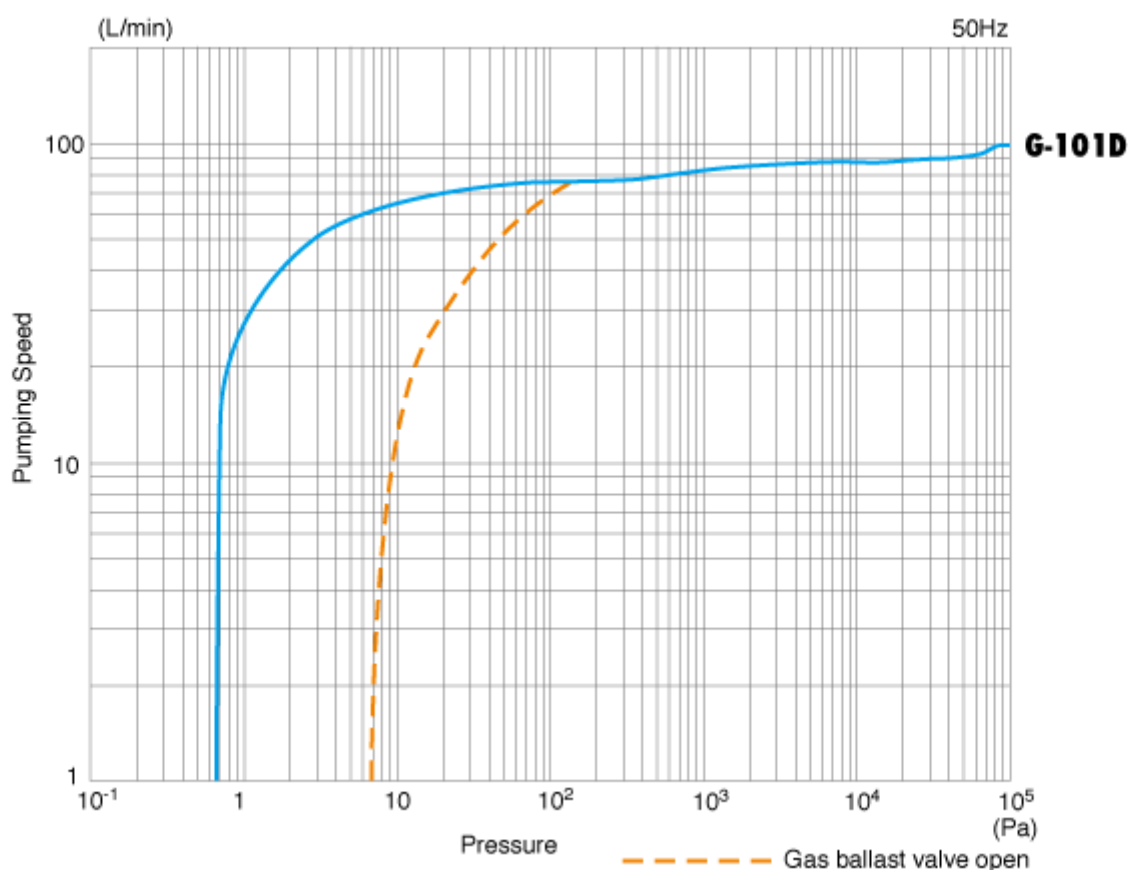
Voltage	Certificate	Remarks
Single phase, 100V	—	
Single phase, 200V	—	

■TUV Certification: A high-quality product that complies with European standards as assessed by an international third party that conducts product safety testing and certification.

## Outline Drawing



# Pumping Speed Curves



## Remarks

- Oil is deteriorated with operating, and becomes the factor of performance shortage. A decrease and the dirt of oil are confirmed, and please regularly add and replace it.
- Please make a suction side into atmospheric pressure when the pump is stopped. If it holds with a vacuum state, pump oil will be full in a pump room, and pump oil will flow backwards to the vacuum-chamber side.
- If operation is performed at high pressure, oil mist is generated at the exhaust side.
- There is a risk of explosion. Never block the outlet or operate the pump with equipment mounted at the outlet side that blocks the passage of gas. Otherwise, the internal pump pressure increases causing the pump to explode, the oil level gauge to protrude or the motor to be overloaded.
- It is a pump only in the room. Please do not set it up in the place, that rain and water splash, and outdoors.

## Applied optional part items

No.	Category name	Series	Name
1	Adapter	Adapter	40mm sq Adapter (M20 Female)
2	Exhaust Pipe	KF Exhaust Pipe	KF25 exhaust pipe (KF25×G1)
3	Exhaust Pipe	Hose Port Exhaust Pipe	Hose port exhaust pipe (dia.27×G1)
4	Maintenance Kit	Maintenance Kit Series	Maintenace Kit A for G-100D/101D
5	Maintenance Kit	Maintenance Kit Series	Maintenace Kit B for G-101D/G-100D 3φ
6	In-line Trap	OMI Series	OMI-100
7	Oil-mist Trap	OMT Series	OMT-100A
8	Vacuum Pump Oil	SMR Series	SMR-100 18L
9	Vacuum Pump Oil	SMR Series	SMR-100 1L
10	Vacuum Pump Oil	SMR Series	SMR-100 4L
11	Suction Pipe	R1/4 Suction Port	A-type suction pipe (R1/4-L20 Male ×M20)
12	Suction Pipe	R1/4 Suction Port	B-type suction pipe (R1/4 Female ×M20)
13	Suction Pipe	R1/4 Suction Port	C-type suction pipe (R1/4-L10 Male × M20)

14	Suction Pipe	KF25 Suction Port	KF25 suction pipe (KF25×M20)
15	Suction Pipe	KF25 Suction Port	KF25 suction pipe(KF25×40mm sq)
16	Suction Pipe	Hose Port Suction Pipe	Hose port suction pipe (dia.12×M20)
17	Suction Pipe	Hose Port Suction Pipe	Hose port suction pipe (dia.15×M20)
18	Suction Pipe	Hose Port Suction Pipe	Hose port suction pipe (dia.18×M20)
19	Suction Pipe	Hose Port Suction Pipe	Hose port suction pipe (dia.22×M20)
20	Suction Pipe	Hose Port Suction Pipe	Hose port suction pipe (dia.27×40mm sq)
21	Suction Pipe	Hose Port Suction Pipe	Hose port suction pipe (dia.8 × M20)

## アルバック機工株式会社

〒881-0037

宮崎県西都市大字茶臼原291-7

TEL:(0983)42-1411(代)

FAX:(0983)42-1422